

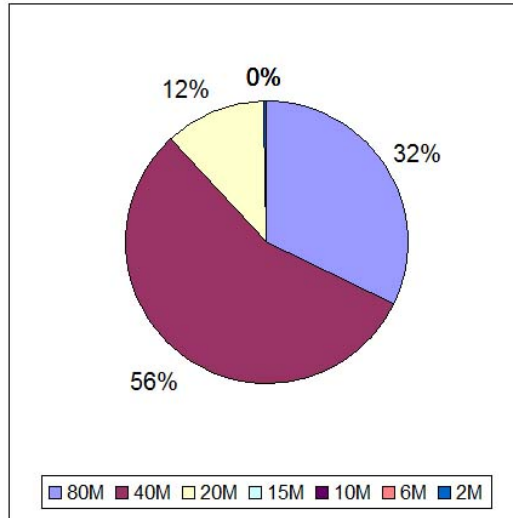
North Carolina QSO Party 2018 County Activity

County		QSOs		County		QSOs			
1	Buncombe	BUN	1,879	4.8%	51	Dare	DAR	200	0.5%
2	Franklin	FRA	1,836	4.7%	52	Cherokee	CHE	198	0.5%
3	Iredell	IRE	1,709	4.4%	53	Wilson	WIL	198	0.5%
4	Orange	ORA	1,669	4.3%	54	Nash	NAS	195	0.5%
5	Moore	MOO	1,482	3.8%	55	Catawba	CAT	168	0.4%
6	Ashe	ASH	1,374	3.5%	56	Hertford	HER	167	0.4%
7	Craven	CRA	1,153	3.0%	57	New Hanover	NEW	158	0.4%
8	Wake	WAK	1,152	3.0%	58	Halifax	HAL	156	0.4%
9	Cumberland	CUM	1,089	2.8%	59	Chowan	CHO	154	0.4%
10	Bladen	BLA	1,072	2.8%	60	Northampton	NOR	154	0.4%
11	Harnett	HAR	1,061	2.7%	61	Johnston	JOH	150	0.4%
12	Forsyth	FOR	1,043	2.7%	62	Pender	PEN	143	0.4%
13	Hoke	HOK	1,010	2.6%	63	Alexander	ALE	136	0.4%
14	Richmond	RIC	934	2.4%	64	Martin	MAR	136	0.4%
15	Mecklenburg	MEC	832	2.1%	65	Yancey	YAN	129	0.3%
16	Scotland	SCO	820	2.1%	66	Stanley	STA	120	0.3%
17	Henderson	HEN	816	2.1%	67	Cleveland	CLE	119	0.3%
18	Alamance	ALA	801	2.1%	68	Caswell	CAS	114	0.3%
19	Guilford	GUI	729	1.9%	69	Gaston	GAS	112	0.3%
20	Pitt	PIT	704	1.8%	70	Mitchell	MIT	112	0.3%
21	Brunswick	BRU	609	1.6%	71	Duplin	DUP	104	0.3%
22	Wayne	WAY	583	1.5%	72	Person	PER	104	0.3%
23	Stokes	STO	558	1.4%	73	Lenoir	LEN	96	0.2%
24	Bertie	BER	516	1.3%	74	Burke	BUR	93	0.2%
25	Montgomery	MON	511	1.3%	75	Jones	JON	93	0.2%
26	Swain	SWA	510	1.3%	76	Warren	WAR	92	0.2%
27	Davie	DAV	497	1.3%	77	Polk	POL	90	0.2%
28	Rowan	ROW	456	1.2%	78	Anson	ANS	83	0.2%
29	Avery	AVE	434	1.1%	79	Madison	MAD	83	0.2%
30	Lincoln	LIN	428	1.1%	80	Surry	SUR	75	0.2%
31	Cabarrus	CAB	423	1.1%	81	Wilkes	WLK	75	0.2%
32	Alleghany	ALL	395	1.0%	82	McDowell	MCD	71	0.2%
33	Davidson	DVD	385	1.0%	83	Granville	GRA	67	0.2%
34	Columbus	COL	378	1.0%	84	Carteret	CAR	33	0.1%
35	Robeson	ROB	377	1.0%	85	Hyde	HYD	33	0.1%
36	Sampson	SAM	371	1.0%	86	Vance	VAN	33	0.1%
37	Union	UNI	370	1.0%	87	Rutherford	RUT	32	0.1%
38	Yadkin	YAD	351	0.9%	88	Lee	LEE	23	0.1%
39	Onslow	ONS	347	0.9%	89	Beaufort	BEA	20	0.1%
40	Washington	WAS	322	0.8%	90	Caldwell	CAL	19	0.0%
41	Pamlico	PAM	295	0.8%	91	Perquimans	PEQ	13	0.0%
42	Rockingham	ROC	281	0.7%	92	Pasquotank	PAS	12	0.0%
43	Greene	GRE	272	0.7%	93	Jackson	JAC	5	0.0%
44	Haywood	HAY	260	0.7%	94	Graham	GRM	4	0.0%
45	Chatham	CHA	235	0.6%	95	Camden	CAM	1	0.0%
46	Durham	DUR	233	0.6%	96	Clay	CLA	1	0.0%
47	Watauga	WAT	228	0.6%	97	Transylvania	TRA	1	0.0%
48	Randolph	RAN	227	0.6%	98	Currituck	CUR	0	0.0%
49	Edgecombe	EDG	215	0.6%	99	Gates	GAT	0	0.0%
50	Macon	MAC	209	0.5%	100	Tyrell	TYR	0	0.0%

2018 North Carolina QSO Party Statistics

North Carolina QSO Party 2018
Bands and Modes

CW	17,584	49.8%
PHONE	17,093	48.4%
DIGITAL	633	1.8%
	<hr/>	
	35,310	



North Carolina QSO Party 2018
Bands and Modes

80M	11,371	32.2%
40M	19,735	55.9%
20M	4,120	11.7%
15M	13	0.0%
10M	11	0.0%
6M	7	0.0%
2M	53	0.2%
	<hr/>	
	35,310	

TOP SCORE SINGLE OP

W4FS Tucker in Franklin County NC **280,277** Also Top Score Overall

TOP SCORE MULTI OP

NC4KW North Carolina Kilo Watts in ORA **258,720**

MOST NC COUNTIES

N8II Jeff in West Virginia **84**

North Carolina QSO Party

	QSO's		Logs	
2018	35,310	107%	353	104%
2017	33,071	93%	339	98%
2016	35,555	96%	346	106%
2015	37,180	115%	326	122%
2014	32,371	129%	267	127%
2013	25,060	170%	210	128%
2012	14,783	----	164	----